

GENERAL CHEMISTRY HOOD



F-100 Gen-5 Bench Fume Hood

F-100 Isolator Gen-5 Bench Fume Hood - Frameless Vertical Sash

ISOLATOR Gen-5 Bench Fume Hood - This general purpose fume hood is designed to meet most laboratory Constant Air Volume (CAV) or Variable Air Volume (VAV) requirements and supplied with and automatic compensating upper by-pass. For VAV, use option MOD-0004 for a restricted by-pass position of observation glass. Designed to mount on a 31" deep counter top. The ISOLATOR Gen-5 bench mounted fume hood is supplied with the following standard features:

Counter Balance Systems - Chain and sprocket system delivers the easiest and most reliable sash operation available with an exceptional product life-cycle ISOLATOR drive system provides economical and reliable operation; tested to over 1 million cycles with no failure.

Sash Design - 1/4" thick tempered safety glass is provided with an epoxy urethane coated steel handle. Optional laminated safety glass or polycarbonate available for special applications. Hood has a frameless vertical sash with a 42" exterior sightline.

Lower Airfoil - Aerodynamic flush sill design allows air to enter the fume hood even when the sash is closed ensuring efficient fume exhaust. The flip up safety trough cover allows electrical wiring or tubing into the fume hood while still permitting full closure of the sash.

Stainless Steel Type 304 Exhaust Collar - Round collar which allows for direct connection to typical exhaust ducts to reduce duct transition costs, minimize static pressure losses and exhaust noise levels.

Electrical - Two UL/CSA approved duplex receptacles provided for 120 volt service, one on each corner post. UL/CSA approved LED light fixture and switch provided. Explosion proof fixtures are available options.

Plumbing - Both corner posts are pre-punched to accept a maximum of five plumbing fittings per post. Factory pre-plumbing is available as well as plumbing fixtures from a variety of manufacturers to meet most plumbing needs.

Access Panels - Interior overlay style access panels provide convenient access and prevent accidental removal. Exterior side panels are also removable for ease of access to plumbing and electrical service fixtures.

Standards - UL 1805 Classified and tested in accordance with ASHRAE 110. Test results available upon request.

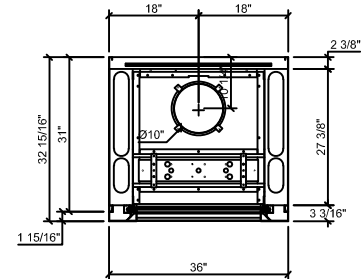
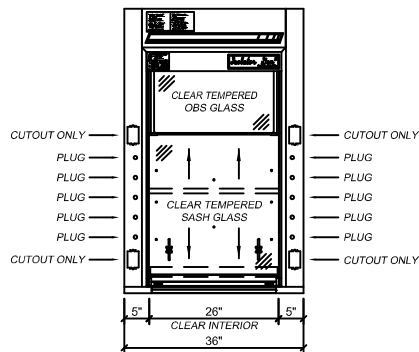


Rendering shown with optional features

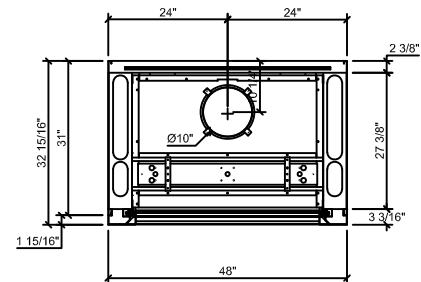
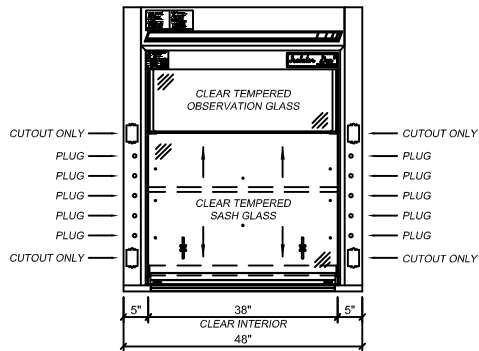
Catalog Number	Width	Clear Interior Depth	Duct Diameter	28" Vertical Open @ 100 FPM	18" Vertical Open @ 100 FPM
F-100-36G5	36"	24"	1:10"	506 CFM @ .14" SP	325 CFM @ .06" SP
F-100-36G5D30	36"	30"	1:10"	506 CFM @ .14" SP	325 CFM @ .06" SP
F-100-48G5	48"	24"	1:10"	739 CFM @ .29" SP	475 CFM @ .12" SP
F-100-48G5D30	48"	30"	1:10"	739 CFM @ .29" SP	475 CFM @ .12" SP
F-100-60G5	60"	24"	1:12"	972 CFM @ .27" SP	625 CFM @ .11" SP
F-100-60G5D30	60"	30"	1:12"	972 CFM @ .27" SP	625 CFM @ .11" SP
F-100-72G5	72"	24"	1:12"	1206 CFM @ .42" SP	775 CFM @ .17" SP
F-100-72G5D30	72"	30"	1:12"	1206 CFM @ .42" SP	775 CFM @ .17" SP
F-100-96G5	96"	24"	2:10"	1672 CFM @ .37" SP	1075 CFM @ .15" SP
F-100-96G5D30	96"	30"	2:10"	1672 CFM @ .37" SP	1075 CFM @ .15" SP

F-100 Gen-5 Bench Fume Hood

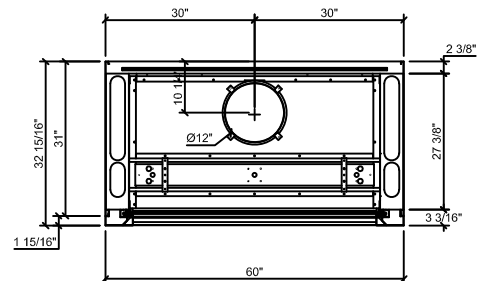
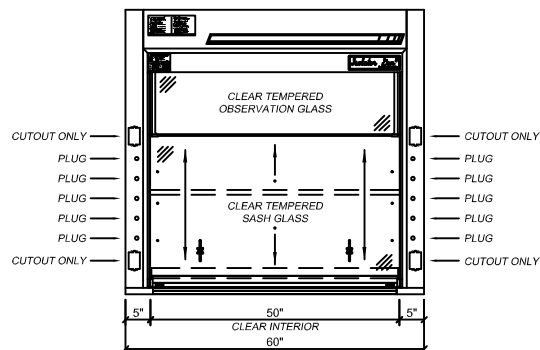
F-100-36G5 - 36" Wide



F-100-48G5 - 48" Wide

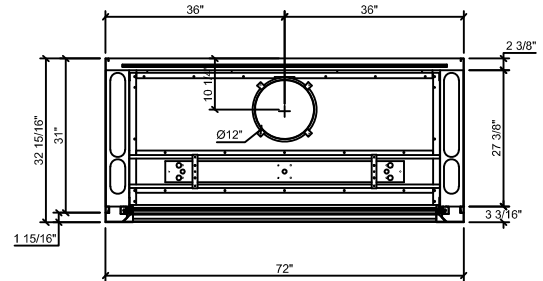
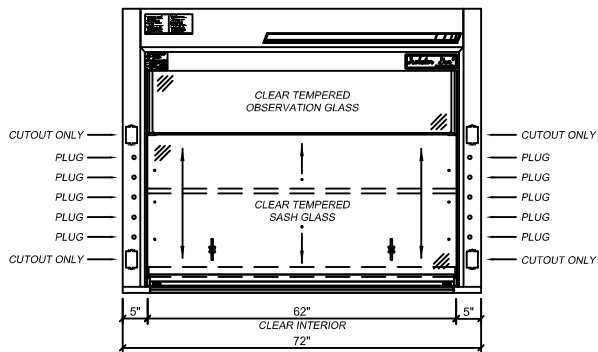


F-100-60G5 - 60" Wide

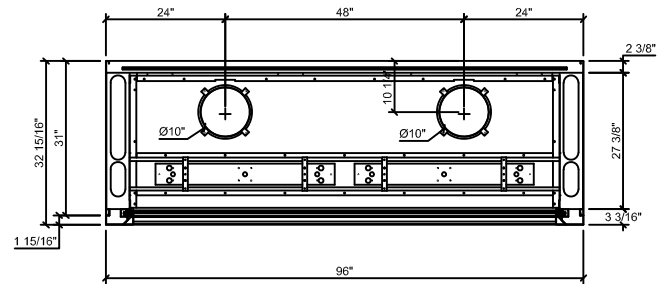
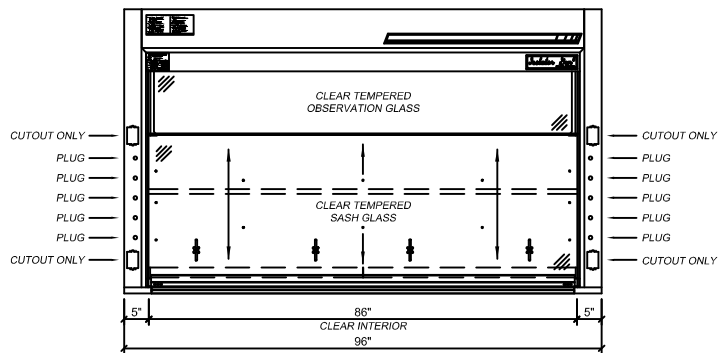


F-100 Gen-5 Bench Fume Hood

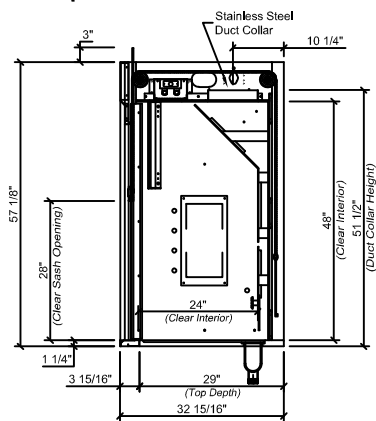
F-100-72G5 - 72" Wide



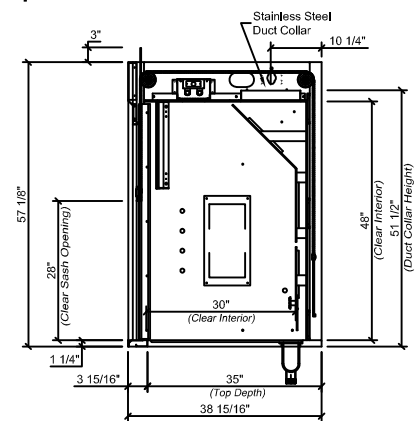
F-100-96G5 - 96" Wide



Section - Standard Depth



Section - 30" Deep



F-100 Gen-5 ADA Bench Fume Hood

F-100 Isolator Gen-5 ADA Bench Fume Hood - Frameless Vertical Sash

ISOLATOR Gen-5ADA Bench Fume Hood - This general purpose fume hood is designed to meet most laboratory Constant Air Volume (CAV) or Variable Air Volume (VAV) requirements and supplied with and automatic compensating upper by-pass. For VAV, use option MOD-0004 for a restricted by-pass position of observation glass. Designed to mount on a 31" deep counter top. The ISOLATOR Gen-5-ADA bench mounted fume hood is supplied with the following standard features in a handicapped accessible form:

Counter Balance Systems - Chain and sprocket system delivers the easiest and most reliable sash operation available with an exceptional product life-cycle ISOLATOR drive system provides economical and reliable operation; tested to over 1 million cycles with no failure.

Sash Design - 1/4" thick tempered safety glass is provided with an epoxy urethane coated steel handle. Optional laminated safety glass or polycarbonate available for special applications. Hood has a frameless vertical sash with a 42" exterior sightline.

Lower Airfoil - Aerodynamic flush sill design allows air to enter the fume hood even when the sash is closed ensuring efficient fume exhaust. The flip up safety trough cover allows electrical wiring or tubing into the fume hood while still permitting full closure of the sash.

Stainless Steel Type 304 Exhaust Collar - Round collar which allows for direct connection to typical exhaust ducts to reduce duct transition costs, minimize static pressure losses and exhaust noise levels.

Electrical - Two UL/CSA approved duplex receptacles provided for 120 volt service, one on each corner post. UL/CSA approved LED light fixture and switch provided. Explosion proof fixtures are available options.

Plumbing - Both corner posts are pre-punched to accept a maximum of one plumbing fitting per post. Factory pre-plumbing is available as well as plumbing fixtures from a variety of manufacturers to meet most plumbing needs.

Access Panels - Interior overlay style access panels provide convenient access and prevent accidental removal. Exterior side panels are also removable for ease of access to plumbing and electrical service fixtures.

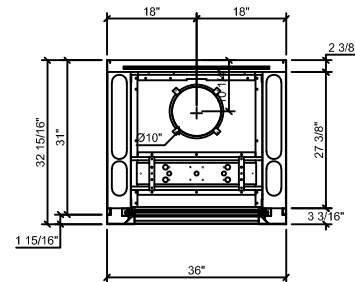
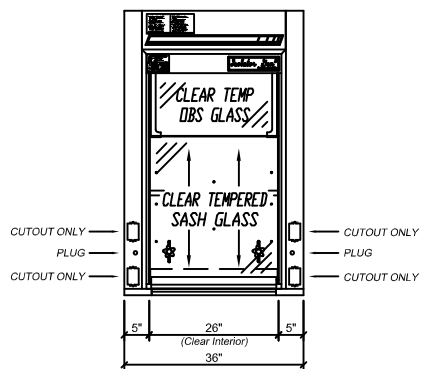
Standards - UL 1805 Classified and tested in accordance with ASHRAE 110. Test results available upon request.



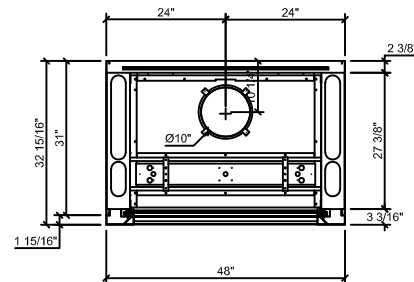
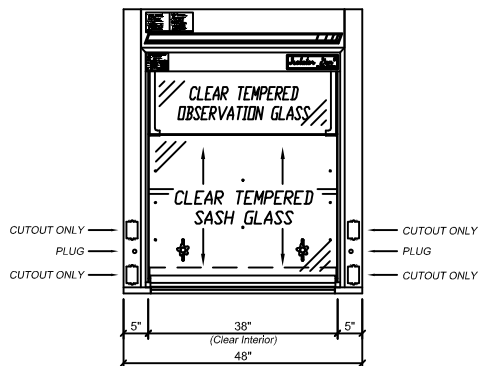
Catalog Number	Width	Clear Interior Depth	Duct Diameter	28" Vertical Open @ 100 FPM	18" Vertical Open @ 100 FPM
F-100-36G5-ADA	36"	24"	1:10"	506 CFM @ .14" SP	325 CFM @ .06" SP
F-100-48G5-ADA	48"	24"	1:10"	739 CFM @ .29" SP	475 CFM @ .12" SP
F-100-60G5-ADA	60"	24"	1:12"	972 CFM @ .27" SP	625 CFM @ .11" SP
F-100-72G5-ADA	72"	24"	1:12"	1206 CFM @ .42" SP	775 CFM @ .17" SP
F-100-96G5-ADA	96"	24"	2:10"	1672 CFM @ .37" SP	1075 CFM @ .15" SP

F-100 Gen-5 ADA Bench Fume Hood

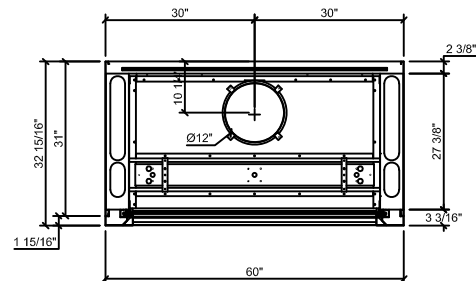
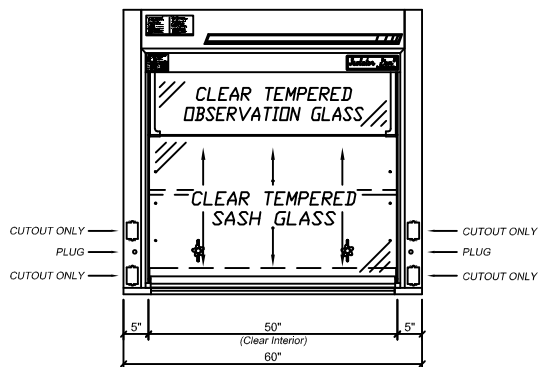
F-100-36G5-ADA - 36" Wide



F-100-48G5-ADA - 48" Wide

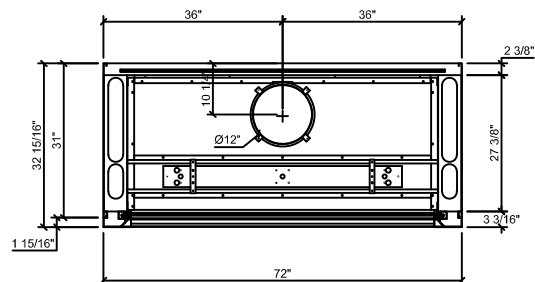
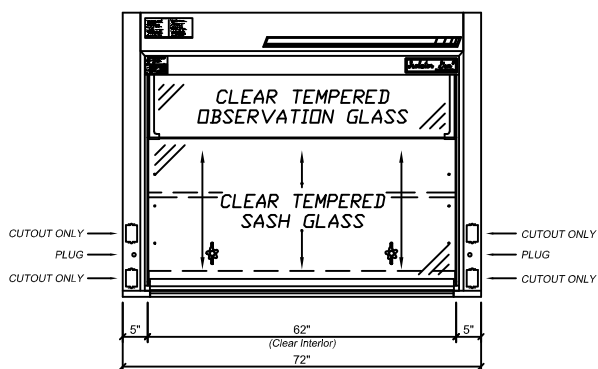


F-100-60G5-ADA - 60" Wide

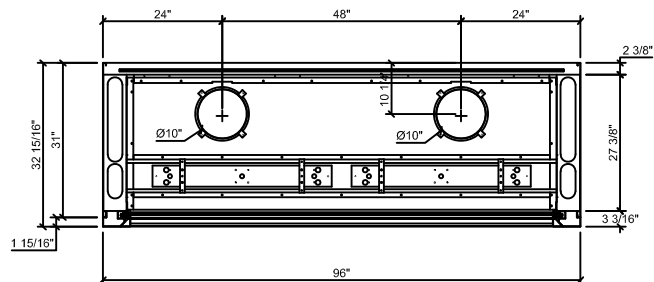
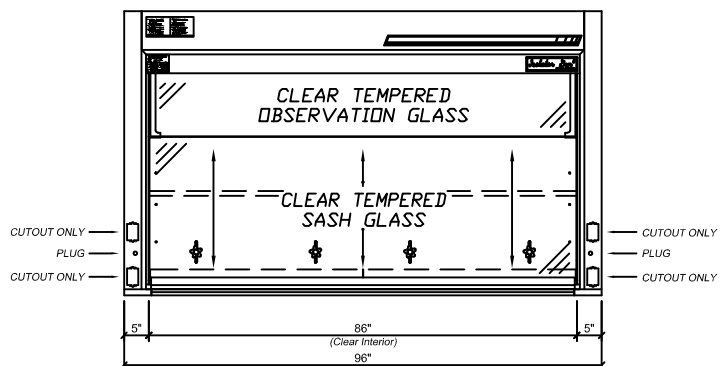


F-100 Gen-5 ADA Bench Fume Hood

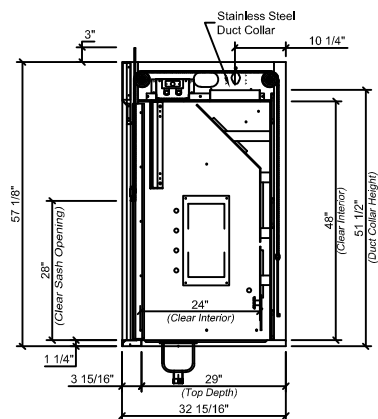
F-100-72G5-ADA - 72" Wide



F-100-96G5-ADA - 96" Wide



Section - Standard Depth



F-101 Gen-5 Bench Fume Hood

F-101 Isolator Gen-5 Bench Fume Hood - Combination Sash

ISOLATOR Gen-5 Bench Fume Hood - This general purpose fume hood is designed to meet most laboratory Constant Air Volume (CAV) or Variable Air Volume (VAV) requirements and supplied with and automatic compensating upper by-pass. For VAV, use option MOD-0004 for a restricted by-pass position of observation glass. Designed to mount on a 31" deep counter top. The ISOLATOR Gen-5 bench mounted fume hood is supplied with the following standard features:

Counter Balance Systems - Chain and sprocket system delivers the easiest and most reliable sash operation available with an exceptional product life-cycle ISOLATOR drive system provides economical and reliable operation; tested to over 1 million cycles with no failure.

Sash Design - 1/4" thick tempered safety panels are provided with a stainless steel sash frame. Optional laminated safety glass or polycarbonate available for special applications. Hood has a framed vertical sash and horizontal panels with a 42" exterior sightline.

Lower Airfoil - Aerodynamic flush sill design allows air to enter the fume hood even when the sash is closed ensuring efficient fume exhaust. The flip up safety trough cover allows electrical wiring or tubing into the fume hood while still permitting full closure of the sash.

Stainless Steel Type 304 Exhaust Collar - Round collar which allows for direct connection to typical exhaust ducts to reduce duct transition costs, minimize static pressure losses and exhaust noise levels.

Electrical - Two UL/CSA approved duplex receptacles provided for 120 volt service, one on each corner post. UL/CSA approved LED light fixture and switch provided. Explosion proof fixtures are available options.

Plumbing - Both corner posts are pre-punched to accept a maximum of five plumbing fittings per post. Factory pre-plumbing is available as well as plumbing fixtures from a variety of manufacturers to meet most plumbing needs.

Access Panels - Interior overlay style access panels provide convenient access and prevent accidental removal. Exterior side panels are also removable for ease of access to plumbing and electrical service fixtures.

Standards - UL 1805 Classified and tested in accordance with ASHRAE 110. Test results available upon request.



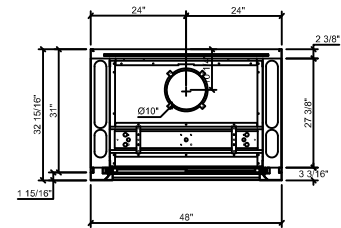
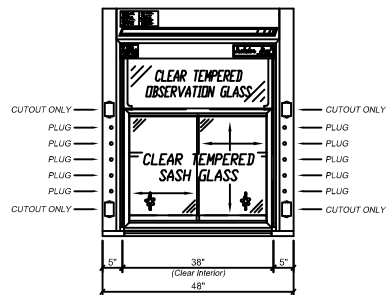
Rendering shown with optional features

Catalog Number	Width	Clear Interior Depth	Duct Diameter	28" Vertical Open @ 100 FPM	18" Vertical Open @ 100 FPM	50% Horizontal Open @ 100 FPM
F-101-48G5	48"	24"	1:10"	739 CFM @ .29" SP	475 CFM @ .12" SP	415 CFM @ .09" SP
F-101-48G5D30	48"	30"	1:10"	739 CFM @ .29" SP	475 CFM @ .12" SP	415 CFM @ .09" SP
F-101-60G5	60"	24"	1:12"	972 CFM @ .27" SP	625 CFM @ .11" SP	549 CFM @ .09" SP
F-101-60G5D30	60"	30"	1:12"	972 CFM @ .27" SP	625 CFM @ .11" SP	549 CFM @ .09" SP
F-101-72G5	72"	24"	1:12"	1206 CFM @ .42" SP	775 CFM @ .17" SP	692 CFM @ .14" SP
F-101-72G5D30	72"	30"	1:12"	1206 CFM @ .42" SP	775 CFM @ .17" SP	692 CFM @ .14" SP
F-101-96G5	96"	24"	2:10"	1672 CFM @ .37" SP	1075 CFM @ .15" SP	968 CFM @ .12" SP
F-101-96G5D30	96"	30"	2:10"	1672 CFM @ .37" SP	1075 CFM @ .15" SP	968 CFM @ .12" SP
F-101-120G5	120"	24"	2:12"	2139 CFM @ .33" SP	1375 CFM @ .14" SP	1244 CFM @ .11" SP
F-101-120G5D30	120"	30"	2:12"	2139 CFM @ .33" SP	1375 CFM @ .14" SP	1244 CFM @ .11" SP
F-101-144G5	144"	24"	2:12"	2606 CFM @ .49" SP	1675 CFM @ .20" SP	1523 CFM @ .17" SP
F-101-144G5D30	144"	30"	2:12"	2606 CFM @ .49" SP	1675 CFM @ .20" SP	1523 CFM @ .17" SP

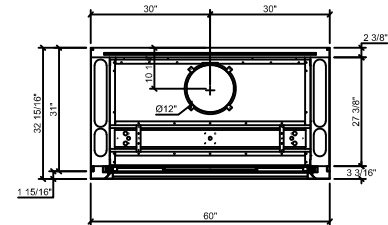
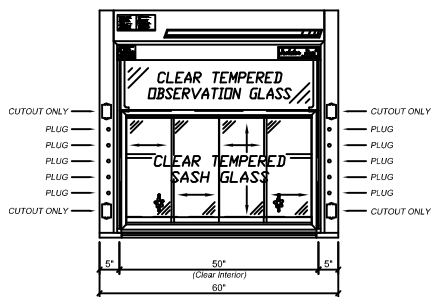
50% open may be achieved two ways: 1. vertical sash open 14", horizontal panels closed or 2. vertical sash closed, horizontal panels full open

F-101 Gen-5 Bench Fume Hood

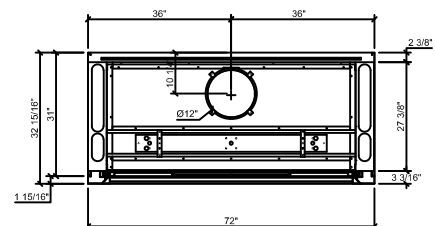
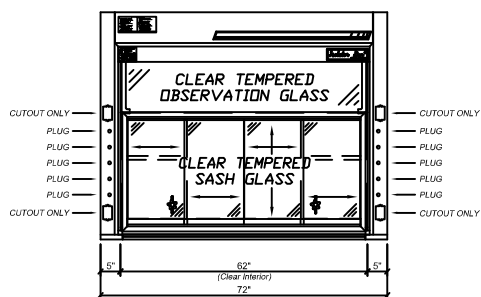
F-101-48G5 - 48" Wide



F-101-60G5 - 60" Wide

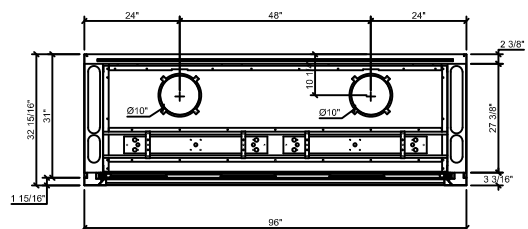
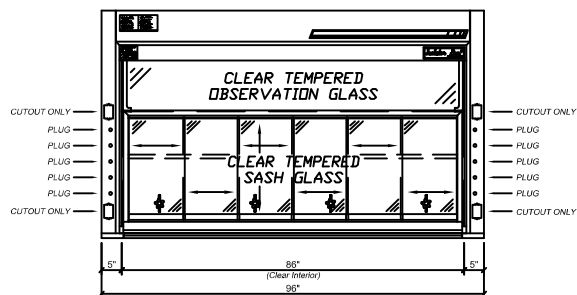


F-101-72G5 - 72" Wide

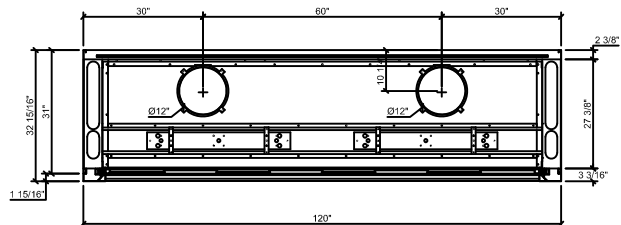
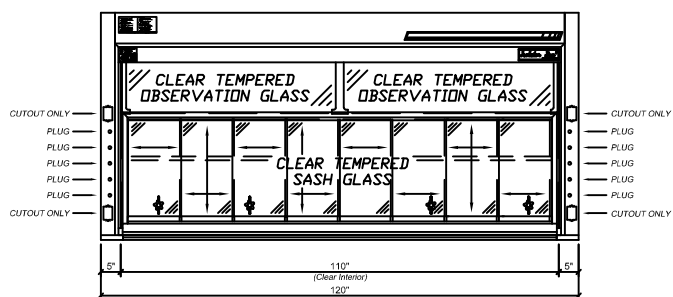


F-101 Gen-5 Bench Fume Hood

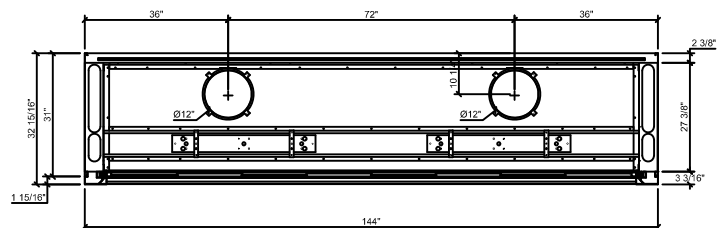
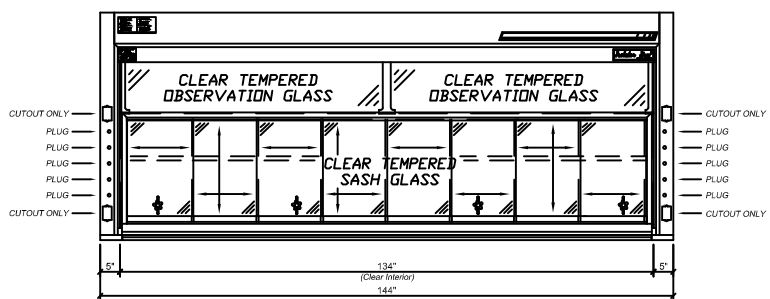
F-101-96G5 - 96" Wide



F-101-120G5 - 120" Wide

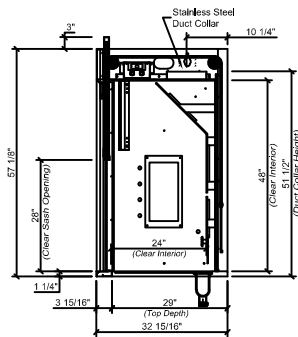


F-101-144G5 - 144" Wide

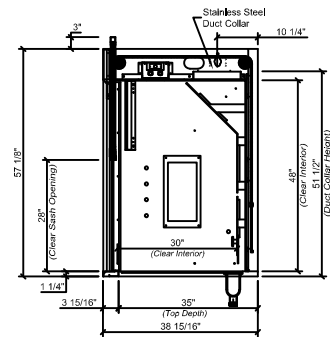


F-101 Gen-5 Bench Fume Hood

Section - Standard Depth



Section - 30" Deep



F-101 Gen-5 ADA Bench Fume Hood

F-101 Isolator Gen-5 ADA Bench Fume Hood - Combination Sash

ISOLATOR Gen-5 Bench Fume Hood - This general purpose fume hood is designed to meet most laboratory Constant Air Volume (CAV) or Variable Air Volume (VAV) requirements and supplied with and automatic compensating upper by-pass. For VAV, use option MOD-0004 for a restricted by-pass position of observation glass. Designed to mount on a 31" deep counter top. The ISOLATOR Gen-5-ADA bench mounted fume hood is supplied with the following standard features in a handicapped accessible form:

Counter Balance Systems - Chain and sprocket system delivers the easiest and most reliable sash operation available with an exceptional product life-cycle ISOLATOR drive system provides economical and reliable operation; tested to over 1 million cycles with no failure.

Sash Design - 1/4" thick tempered safety panels are provided with a stainless steel sash frame. Optional laminated safety glass or polycarbonate available for special applications. Hood has a framed vertical sash and horizontal panels with a 42" exterior sightline.

Lower Airfoil - Aerodynamic flush sill design allows air to enter the fume hood even when the sash is closed ensuring efficient fume exhaust. The flip up safety trough cover allows electrical wiring or tubing into the fume hood while still permitting full closure of the sash.

Stainless Steel Type 304 Exhaust Collar - Round collar which allows for direct connection to typical exhaust ducts to reduce duct transition costs, minimize static pressure losses and exhaust noise levels.

Electrical - Two UL/CSA approved duplex receptacles provided for 120 volt service, one on each corner post. UL/CSA approved LED light fixture and switch provided. Explosion proof fixtures are available options.

Plumbing - Both corner posts are pre-punched to accept a maximum of one plumbing fitting per post. Factory pre-plumbing is available as well as plumbing fixtures from a variety of manufacturers to meet most plumbing needs.

Access Panels - Interior overlay style access panels provide convenient access and prevent accidental removal. Exterior side panels are also removable for ease of access to plumbing and electrical service fixtures.

Standards - UL 1805 Classified and tested in accordance with ASHRAE 110. Test results available upon request.

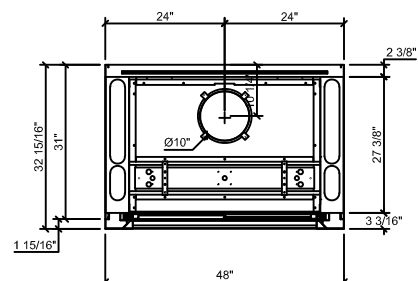
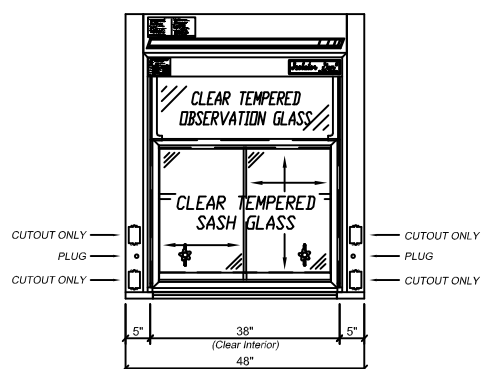


Catalog Number	Width	Clear Interior Depth	Duct Diameter	28" Vertical Open @ 100 FPM	18" Vertical Open @ 100 FPM	50% Horizontal Open @ 100 FPM
F-101-48G5-ADA	48"	24"	1:10"	739 CFM @ .29" SP	475 CFM @ .12" SP	415 CFM @ .09" SP
F-101-60G5-ADA	60"	24"	1:12"	972 CFM @ .27" SP	625 CFM @ .11" SP	549 CFM @ .09" SP
F-101-72G5-ADA	72"	24"	1:12"	1206 CFM @ .42" SP	775 CFM @ .17" SP	692 CFM @ .14" SP
F-101-96G5-ADA	96"	24"	2:10"	1672 CFM @ .37" SP	1075 CFM @ .15" SP	968 CFM @ .12" SP

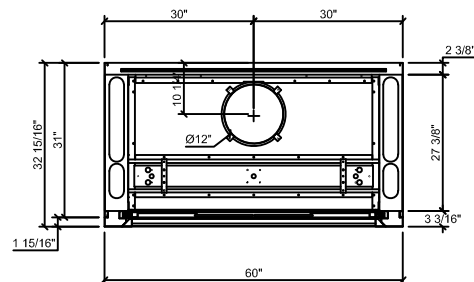
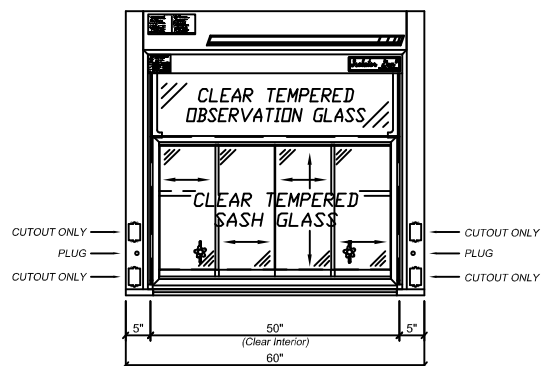
50% open may be achieved two ways: 1. vertical sash open 14", horizontal panels closed or 2. vertical sash closed, horizontal panels full open

F-101 Gen-5 ADA Bench Fume Hood

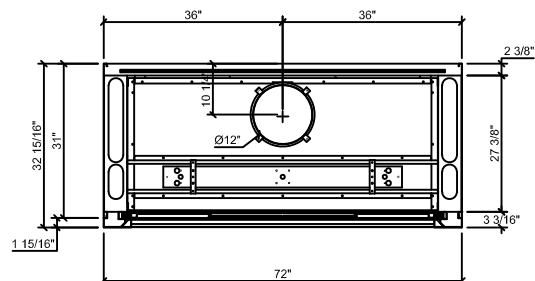
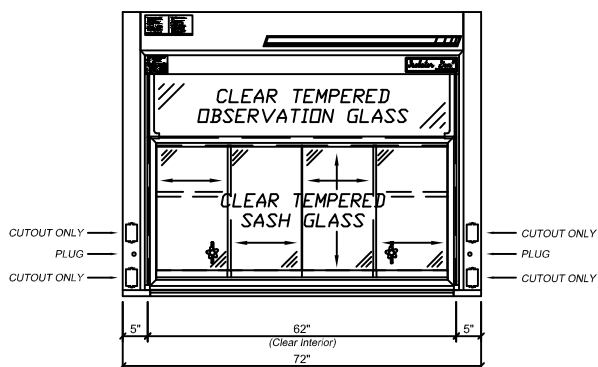
F-101-48G5-ADA - 48" Wide



F-101-60G5-ADA - 60" Wide

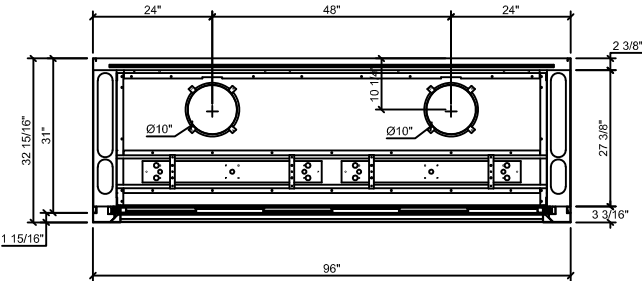
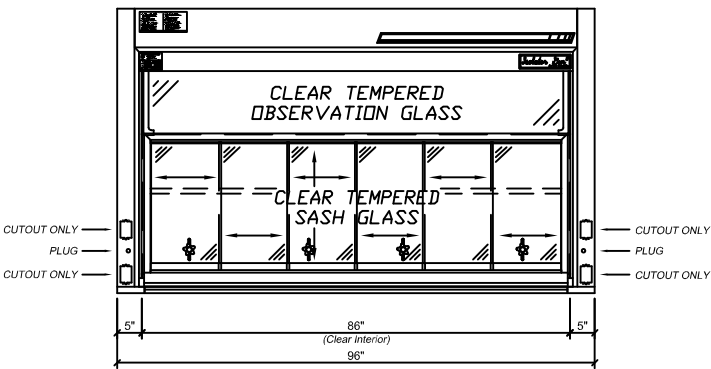


F-101-72G5-ADA - 72" Wide

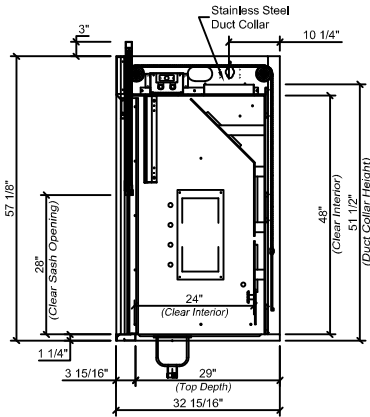


F-101 Gen-5 ADA Bench Fume Hood

F-101-96G5-ADA - 96" Wide



Section - Standard Depth



F-102 Gen-5 Bench Fume Hood

F-102 Isolator Gen-5 Bench Fume Hood - Horizontal Sash

ISOLATOR Gen-5 Bench Fume Hood - This general purpose fume hood is designed to meet most laboratory Constant Air Volume (CAV) or Variable Air Volume (VAV) requirements and supplied with and automatic compensating upper by-pass. For VAV, use option MOD-0004 for a restricted by-pass position of observation glass. Designed to mount on a 31" deep counter top. The ISOLATOR Gen-5 bench mounted fume hood is supplied with the following standard features:

Sash System – Top hung epoxy urethane coated framed horizontal sashes offer exceptional product life-cycle and minimize barriers.

Sash Design - 1/4" thick tempered safety glass is set in horizontal sliding epoxy urethane coated steel frames. Optional laminated safety glass or polycarbonate available for special applications. Hood has a horizontal only sash with a 42" exterior sightline.

Stainless Steel Type 304 Exhaust Collar - Round collar which allows for direct connection to typical exhaust ducts to reduce duct transition costs, minimize static pressure losses and exhaust noise levels.

Electrical - Two UL/CSA approved duplex receptacles provided for 120 volt service, one on each corner post. UL/CSA approved LED light fixture and switch provided. Explosion proof fixtures are available options.

Plumbing - Both corner posts are pre-punched to accept a maximum of five plumbing fittings per post. Factory pre-plumbing is available as well as plumbing fixtures from a variety of manufacturers to meet most plumbing needs.

Access Panels - Interior overlay style access panels provide convenient access and prevent accidental removal. Exterior side panels are also removable for ease of access to plumbing and electrical service fixtures.

Standards - UL 1805 Classified and tested in accordance with ASHRAE 110. Test results available upon request.

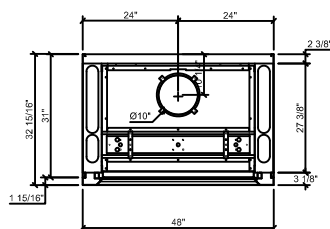
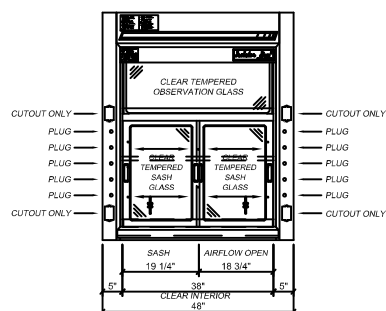


Rendering shown with optional features

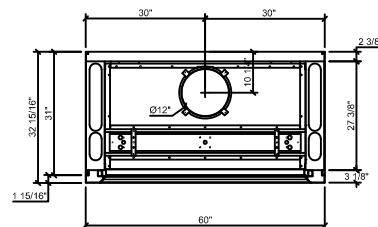
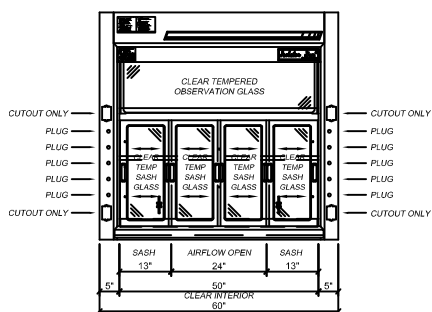
Catalog Number	Width	Clear Interior Depth	Duct Diameter	28" Vertical Open @ 100 FPM	18" Vertical Open @ 100 FPM	50% Horizontal Open @ 100 FPM
F-102-48G5	48"	24"	1:10"	N/A	N/A	445 CFM @ .10" SP
F-102-48G5D30	48"	30"	1:10"	N/A	N/A	445 CFM @ .10" SP
F-102-60G5	60"	24"	1:12"	N/A	N/A	572 CFM @ .09" SP
F-102-60G5D30	60"	30"	1:12"	N/A	N/A	572 CFM @ .09" SP
F-102-72G5	72"	24"	1:12"	N/A	N/A	714 CFM @ .15" SP
F-102-72G5D30	72"	30"	1:12"	N/A	N/A	714 CFM @ .15" SP
F-102-96G5	96"	24"	2:10"	N/A	N/A	984 CFM @ .13" SP
F-102-96G5D30	96"	30"	2:10"	N/A	N/A	984 CFM @ .13" SP

F-102 Gen-5 Bench Fume Hood

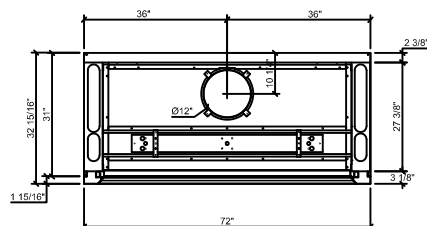
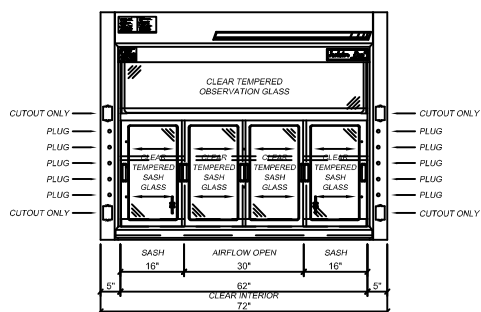
F-102-48G5 - 48" Wide



F-102-60G5 - 60" Wide

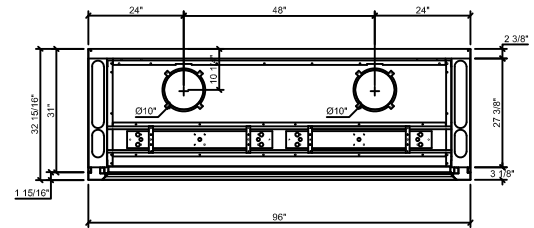
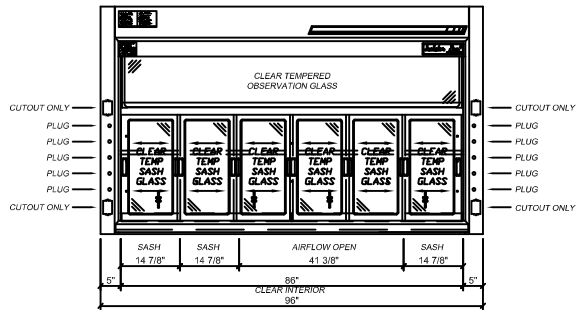


F-102-72G5 - 72" Wide

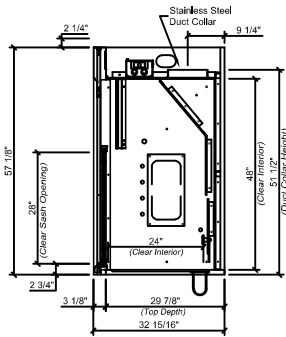


F-102 Gen-5 Bench Fume Hood

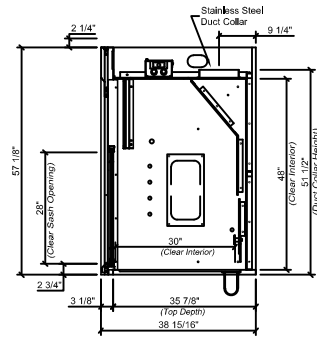
F-102-96G5 - 96" Wide



Section - Standard Depth



Section - 30" Deep



F-103 Gen-5 Bench Fume Hood

F-103 Isolator Gen-5 Bench Fume Hood - Framed Vertical Sash

ISOLATOR Gen-5 Bench Fume Hood - This general purpose fume hood is designed to meet most laboratory Constant Air Volume (CAV) or Variable Air Volume (VAV) requirements and supplied with and automatic compensating upper by-pass. For VAV, use option MOD-0004 for a restricted by-pass position of observation glass. Designed to mount on a 31" deep counter top. The ISOLATOR Gen-5 bench mounted fume hood is supplied with the following standard features:

Counter Balance Systems - Chain and sprocket system delivers the easiest and most reliable sash operation available with an exceptional product life-cycle ISOLATOR drive system provides economical and reliable operation; tested to over 1 million cycles with no failure.

Sash Design - 1/4" thick tempered safety glass is provided with an epoxy urethane coated steel frame. Optional laminated safety glass or polycarbonate available for special applications. Hood has a framed vertical sash with a 42" exterior sightline.

Lower Airfoil - Aerodynamic flush sill design allows air to enter the fume hood even when the sash is closed ensuring efficient fume exhaust. The flip up safety trough cover allows electrical wiring or tubing into the fume hood while still permitting full closure of the sash.

Stainless Steel Type 304 Exhaust Collar - Round collar which allows for direct connection to typical exhaust ducts to reduce duct transition costs, minimize static pressure losses and exhaust noise levels.

Electrical - Two UL/CSA approved duplex receptacles provided for 120 volt service, one on each corner post. UL/CSA approved LED light fixture and switch provided. Explosion proof fixtures are available options.

Plumbing - Both corner posts are pre-punched to accept a maximum of five plumbing fittings per post. Factory pre-plumbing is available as well as plumbing fixtures from a variety of manufacturers to meet most plumbing needs.

Access Panels - Interior overlay style access panels provide convenient access and prevent accidental removal. Exterior side panels are also removable for ease of access to plumbing and electrical service fixtures.

Standards - UL 1805 Classified and tested in accordance with ASHRAE 110. Test results available upon request.

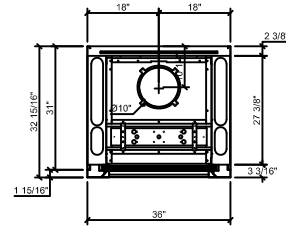
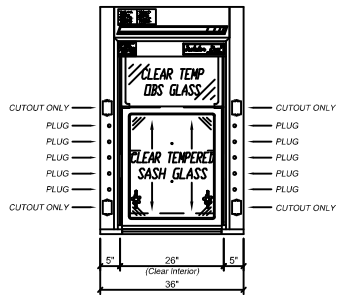


Rendering shown with optional features

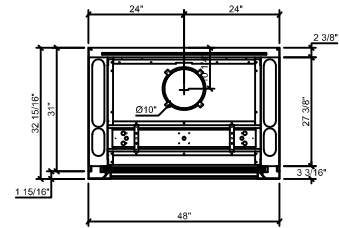
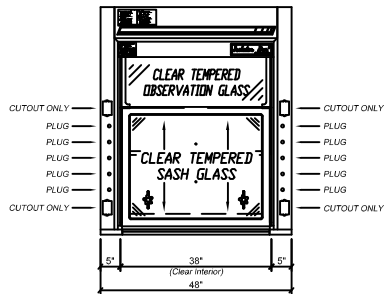
Catalog Number	Width	Clear Interior Depth	Duct Diameter	28" Vertical Open @ 100 FPM	18" Vertical Open @ 100 FPM
F-103-36G5	36"	24"	1:10"	506 CFM @ .14" SP	325 CFM @ .06" SP
F-103-36G5D30	36"	30"	1:10"	506 CFM @ .14" SP	325 CFM @ .06" SP
F-103-48G5	48"	24"	1:10"	739 CFM @ .29" SP	475 CFM @ .12" SP
F-103-48G5D30	48"	30"	1:10"	739 CFM @ .29" SP	475 CFM @ .12" SP
F-103-60G5	60"	24"	1:12"	972 CFM @ .27" SP	625 CFM @ .11" SP
F-103-60G5D30	60"	30"	1:12"	972 CFM @ .27" SP	625 CFM @ .11" SP
F-103-72G5	72"	24"	1:12"	1206 CFM @ .42" SP	775 CFM @ .17" SP
F-103-72G5D30	72"	30"	1:12"	1206 CFM @ .42" SP	775 CFM @ .17" SP
F-103-96G5	96"	24"	2:10"	1672 CFM @ .37" SP	1075 CFM @ .15" SP
F-103-96G5D30	96"	30"	2:10"	1672 CFM @ .37" SP	1075 CFM @ .15" SP
F-103-120G5	120"	24"	2:12"	2139 CFM @ .33" SP	1375 CFM @ .14" SP
F-103-120G5D30	120"	30"	2:12"	2139 CFM @ .33" SP	1375 CFM @ .14" SP
F-103-144G5	144"	24"	2:12"	2606 CFM @ .49" SP	1675 CFM @ .20" SP
F-103-144G5D30	144"	30"	2:12"	2606 CFM @ .49" SP	1675 CFM @ .20" SP

F-103 Gen-5 Bench Fume Hood

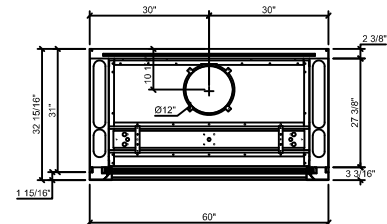
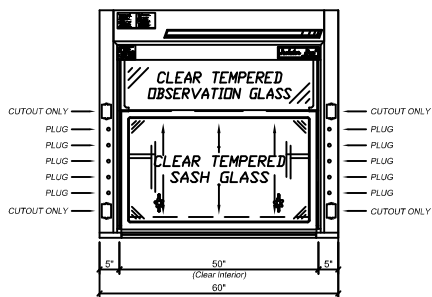
F-103-36G5 - 36" Wide



F-103-48G5 - 48" Wide

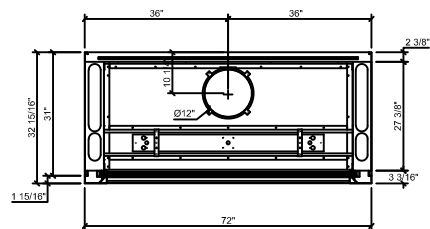
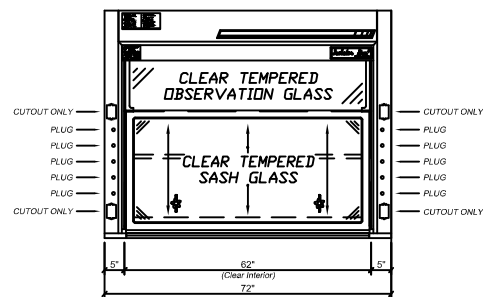


F-103-60G5 - 60" Wide

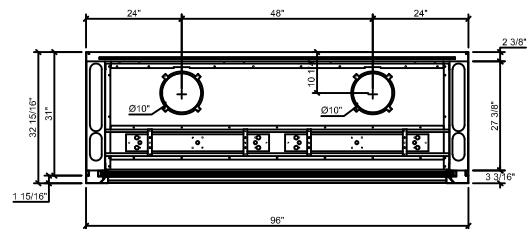
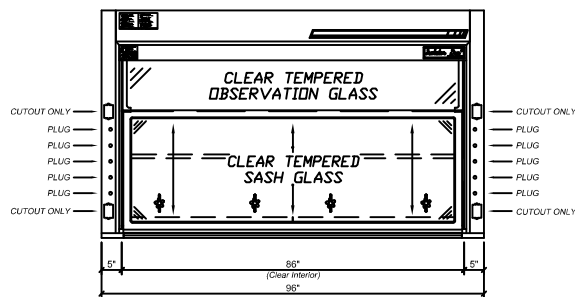


F-103 Gen-5 Bench Fume Hood

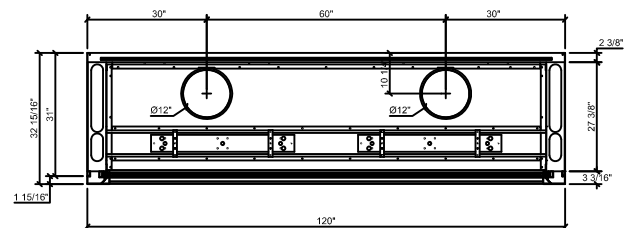
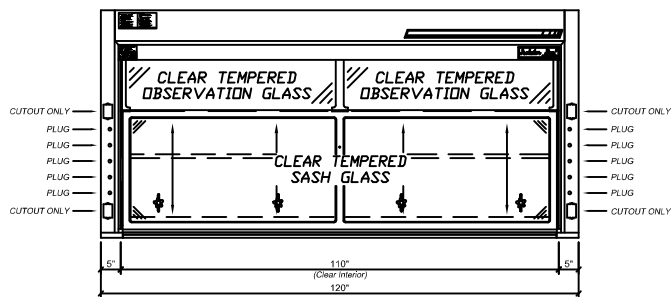
F-103-72G5 - 72" Wide



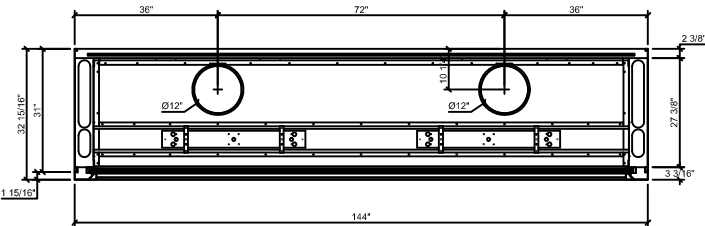
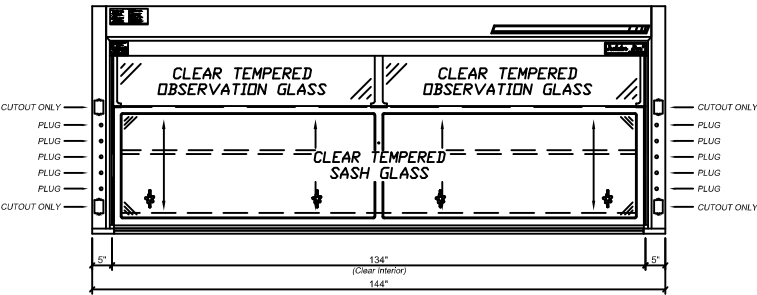
F-103-96G5 - 96" Wide



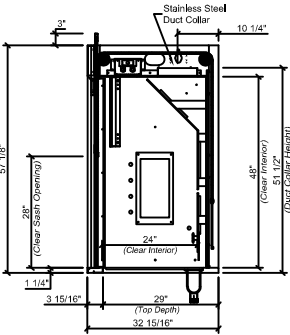
F-103-120G5 - 120" Wide



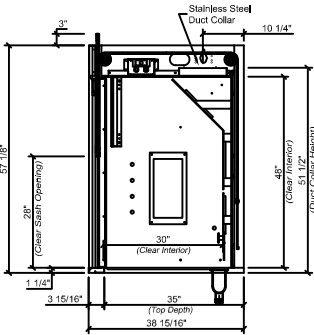
F-103-144G5 - 144" Wide



Section - Standard Depth



Section - 30" Deep



F-103 Gen-5 ADA Bench Fume Hood

F-103 Isolator Gen-5 ADA Bench Fume Hood - Framed Vertical Sash

ISOLATOR Gen-5 Bench Fume Hood - This general purpose fume hood is designed to meet most laboratory Constant Air Volume (CAV) or Variable Air Volume (VAV) requirements and supplied with and automatic compensating upper by-pass. For VAV, use option MOD-0004 for a restricted by-pass position of observation glass. Designed to mount on a 31" deep counter top. The ISOLATOR Gen-5-ADA bench mounted fume hood is supplied with the following standard features in a handicapped accessible form:

Counter Balance Systems - Chain and sprocket system delivers the easiest and most reliable sash operation available with an exceptional product life-cycle ISOLATOR drive system provides economical and reliable operation; tested to over 1 million cycles with no failure.

Sash Design - 1/4" thick tempered safety glass is provided with an epoxy urethane coated steel frame. Optional laminated safety glass or polycarbonate available for special applications. Hood has a framed vertical sash with a 42" exterior sightline.

Lower Airfoil - Aerodynamic flush sill design allows air to enter the fume hood even when the sash is closed ensuring efficient fume exhaust. The flip up safety trough cover allows electrical wiring or tubing into the fume hood while still permitting full closure of the sash.

Stainless Steel Type 304 Exhaust Collar - Round collar which allows for direct connection to typical exhaust ducts to reduce duct transition costs, minimize static pressure losses and exhaust noise levels.

Electrical - Two UL/CSA approved duplex receptacles provided for 120 volt service, one on each corner post. UL/CSA approved LED light fixture and switch provided. Explosion proof fixtures are available options.

Plumbing - Both corner posts are pre-punched to accept a maximum of one plumbing fitting per post. Factory pre-plumbing is available as well as plumbing fixtures from a variety of manufacturers to meet most plumbing needs.

Access Panels - Interior overlay style access panels provide convenient access and prevent accidental removal. Exterior side panels are also removable for ease of access to plumbing and electrical service fixtures.

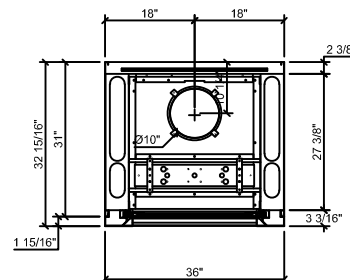
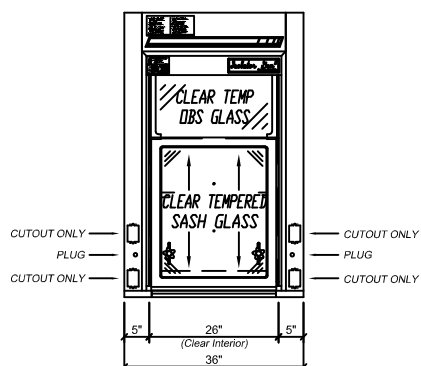
Standards - UL 1805 Classified and tested in accordance with ASHRAE 110. Test results available upon request.



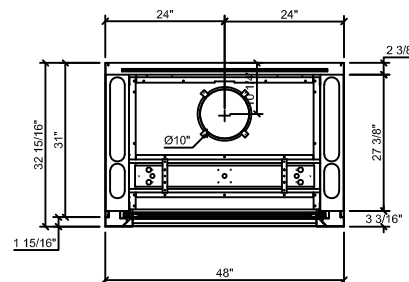
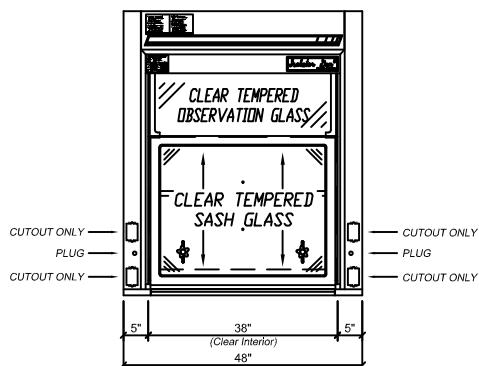
Catalog Number	Width	Clear Interior Depth	Duct Diameter	28" Vertical Open @ 100 FPM	18" Vertical Open @ 100 FPM
F-103-36G5-ADA	36"	24"	1:10"	506 CFM @ .14" SP	325 CFM @ .06" SP
F-103-48G5-ADA	48"	24"	1:10"	739 CFM @ .29" SP	475 CFM @ .12" SP
F-103-60G5-ADA	60"	24"	1:12"	972 CFM @ .27" SP	625 CFM @ .11" SP
F-103-72G5-ADA	72"	24"	1:12"	1206 CFM @ .42" SP	775 CFM @ .17" SP
F-103-96G5-ADA	96"	24"	2:10"	1672 CFM @ .37" SP	1075 CFM @ .15" SP

F-103 Gen-5 ADA Bench Fume Hood

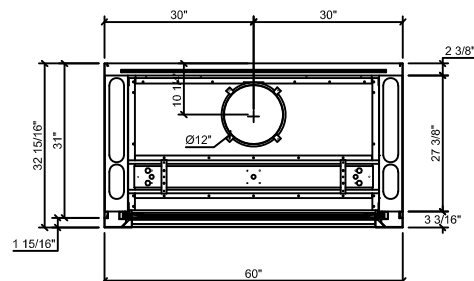
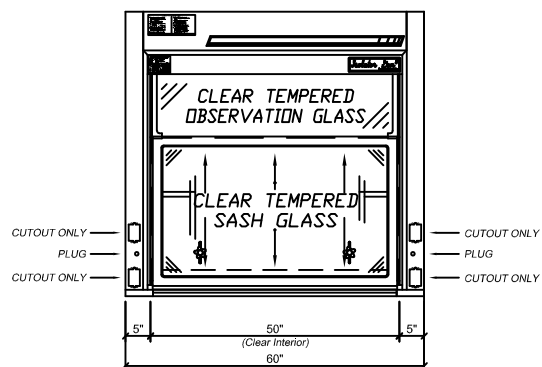
F-103-36G5-ADA - 36" Wide



F-103-48G5-ADA - 48" Wide

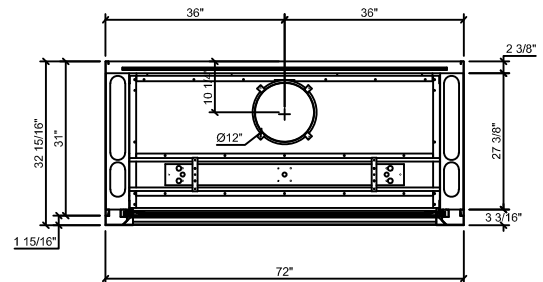
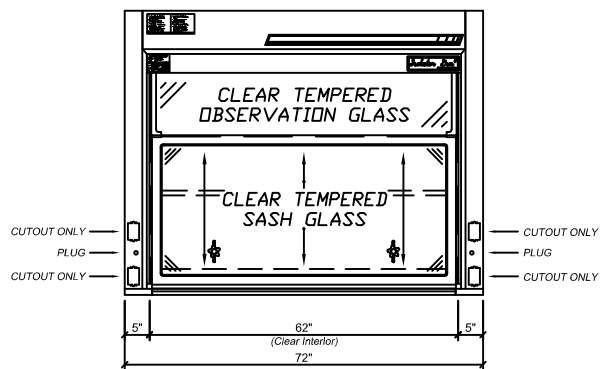


F-103-60G5-ADA - 60" Wide

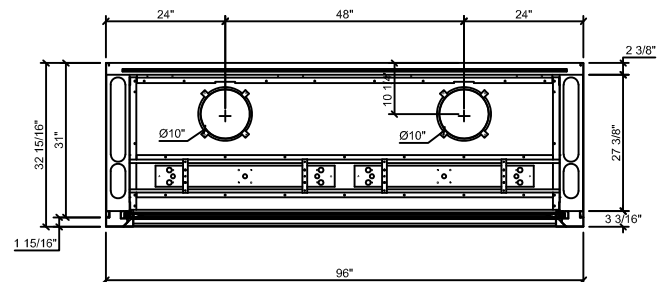
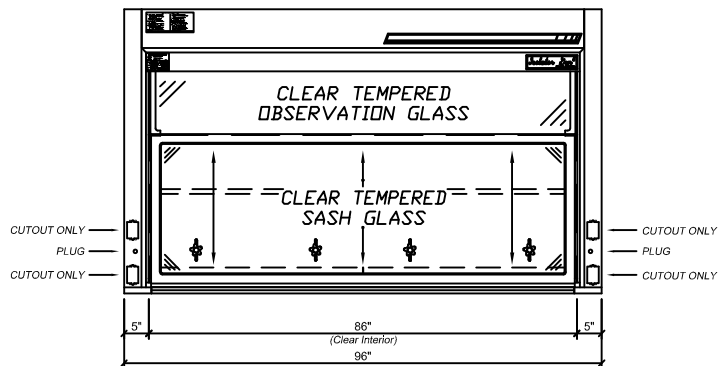


F-103 Gen-5 ADA Bench Fume Hood

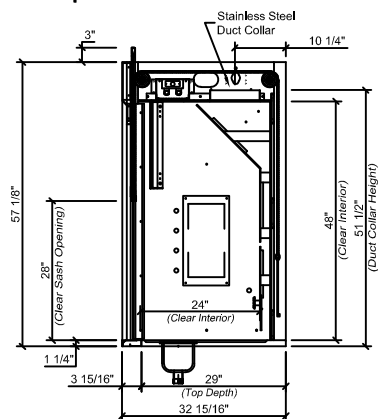
F-103-72G5-ADA - 72" Wide



F-103-96G5-ADA - 96" Wide



Section - Standard Depth



F-121 Isolator Gen-5 Bench Fume Hood - Frameless Vertical Sash

ISOLATOR Gen-5 Bench Fume Hood - This fume hood is designed to connect classroom to the prep room. Constant Air Volume (CAV) or Variable Air Volume (VAV) requirements and supplied with and automatic compensating upper by-pass. For VAV, use option MOD-0004 for a restricted by-pass position of observation glass. Designed to mount on a 26.25" deep counter top. The ISOLATOR Gen-5 bench mounted pass-through fume hood is supplied with the following standard features:

Counter Balance Systems - Chain and sprocket system delivers the easiest and most reliable sash operation available with an exceptional product life-cycle ISOLATOR drive system provides economical and reliable operation; tested to over 1 million cycles with no failure.

Sash Design - 1/4" thick tempered safety glass is provided with epoxy urethane coated steel handles. Optional laminated safety glass or polycarbonate available for special applications. Hood has frameless vertical sashes with a 42" exterior sightline and sash interlock safety system to one sash at a time to be operated.

Lower Airfoil - Aerodynamic flush sill design allows air to enter the fume hood even when the sash is closed ensuring efficient fume exhaust. The flip up safety trough cover allows electrical wiring or tubing into the fume hood while still permitting full closure of the sash.

Stainless Steel Type 304 Exhaust Collar - Round collar which allows for direct connection to typical exhaust ducts to reduce duct transition costs, minimize static pressure losses and exhaust noise levels.

Electrical - Two UL/CSA approved duplex receptacles provided for 120 volt service, one on each corner post. UL/CSA approved LED light fixture and switch provided. Explosion proof fixtures are available options.

Plumbing - Both corner posts are pre-punched to accept a maximum of five plumbing fittings per post. Factory pre-plumbing is available as well as plumbing fixtures from a variety of manufacturers to meet most plumbing needs.

Access Panels – N/A

Standards - UL 1805 Classified and tested in accordance with ASHRAE 110. Test results available upon request.

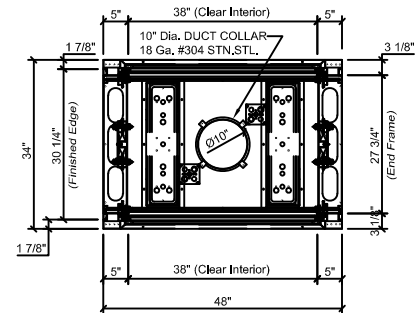
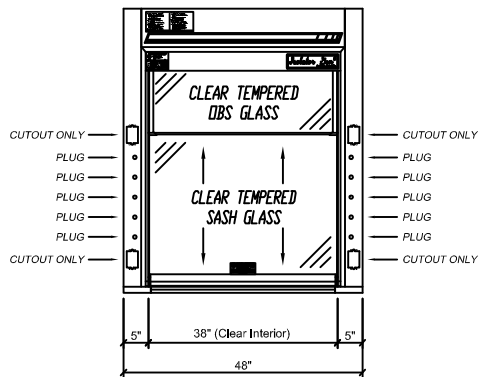


Rendering shown with optional features

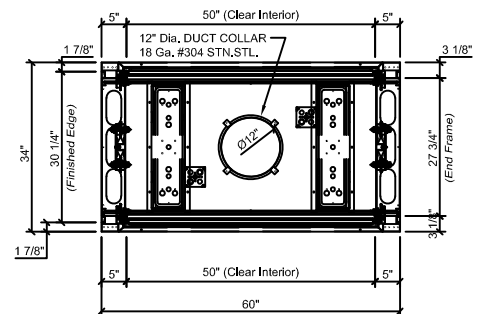
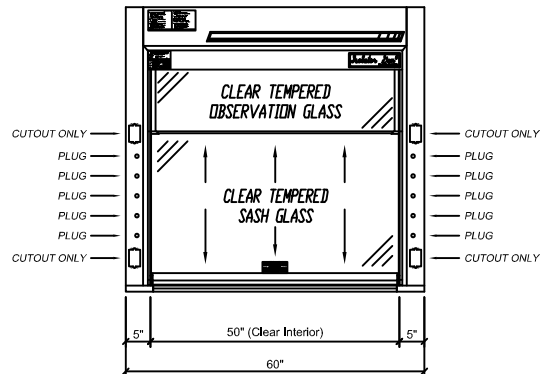
Catalog Number	Width	Clear Interior Depth	Duct Diameter	28" Vertical Open @ 100 FPM	18" Vertical Open @ 100 FPM
F-121G5-48	48"	30 1/4"	1:10"	844 CFM @ .38" SP	581 CFM @ .18" SP
F-121G5-60	60"	30 1/4"	1:12"	1111 CFM @ .36" SP	764 CFM @ .17" SP
F-121G5-72	72"	30 1/4"	1:12"	1378 CFM @ .55" SP	947 CFM @ .26" SP

F-121 Gen-5 Bench Fume Hood

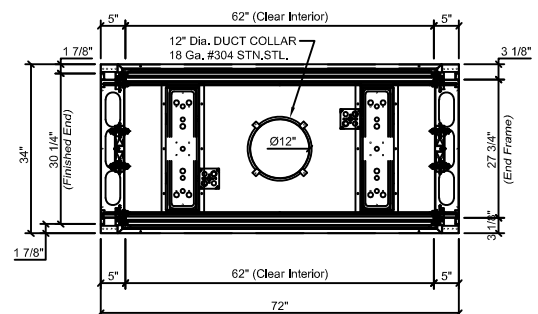
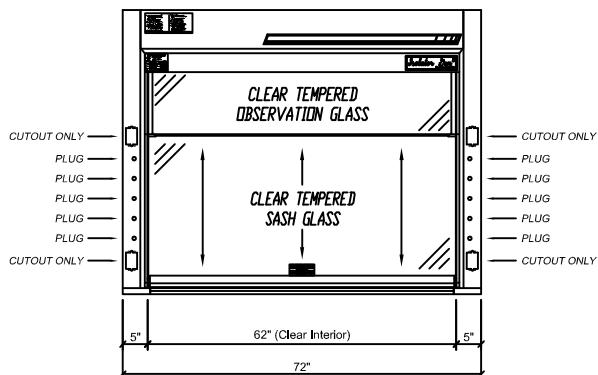
F-121-48G5 - 48" Wide



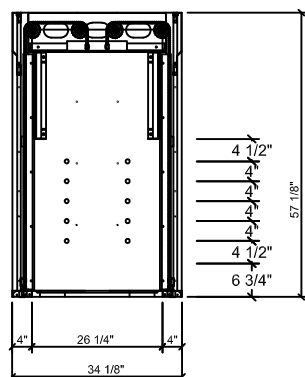
F-121-60G5 - 60" Wide



F-121-72G5 - 72" Wide



Section



F-181 Bench Fume Hood

F181 Dual Postless Bench Fume Hood - Combination Sash

ISOLATOR Gen-5 Bench Fume Hood - This specialty fume hood is designed to meet most laboratory Constant Air Volume (CAV) or Variable Air Volume (VAV) requirements and supplied with and automatic compensating upper by-pass. For VAV, use option MOD-0004 for a restricted by-pass position of observation glass. Designed to mount on a 31" deep counter top. The ISOLATOR dual postless Gen-5 bench mounted fume hood is supplied with the following standard features:

Counter Balance Systems - Chain and sprocket system delivers the easiest and most reliable sash operation available with an exceptional product life-cycle ISOLATOR drive system provides economical and reliable operation; tested to over 1 million cycles with no failure.

Sash Design - 1/4" thick tempered safety glass panels are provided with stainless steel frames. Optional laminated safety glass or polycarbonate available for special applications. Hood has a two framed combination vertical sashes with horizontal panes and a 42" exterior sightline.

Lower Airfoil - Aerodynamic flush sill design allows air to enter the fume hood even when the sash is closed ensuring efficient fume exhaust. The flip up safety trough cover allows electrical wiring or tubing into the fume hood while still permitting full closure of the sash.

Stainless Steel Type 304 Exhaust Collar - Round collar which allows for direct connection to typical exhaust ducts to reduce duct transition costs, minimize static pressure losses and exhaust noise levels.

Electrical - Two UL/CSA approved duplex receptacles provided for 120 volt service, one on each corner post. UL/CSA approved LED light fixture and switch provided. Explosion proof fixtures are available options.

Plumbing - Both corner posts are pre-punched to accept a maximum of five plumbing fittings per post. Factory pre-plumbing is available as well as plumbing fixtures from a variety of manufacturers to meet most plumbing needs.

Access Panels - Interior overlay style access panels provide convenient access and prevent accidental removal. Exterior side panels are also removable for ease of access to plumbing and electrical service fixtures.

Standards - UL 1805 Classified and tested in accordance with ASHRAE 110. Test results available upon request.



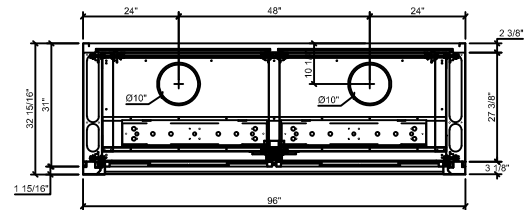
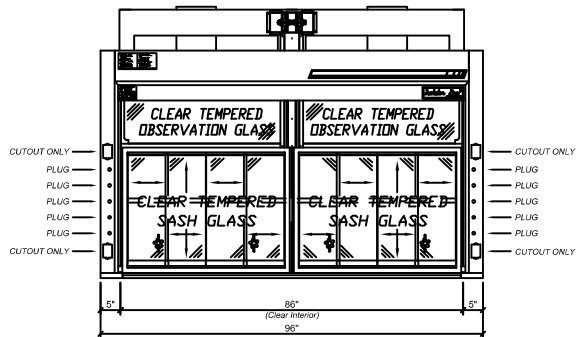
Rendering shown with optional features

Catalog Number	Width	Clear Interior Depth	Duct Diameter	Both Sashes 28" Vertical Open @ 100 FPM	Both Sashes 18" Vertical Open @ 100 FPM	50% Horizontal Open @ 100 FPM
F-181-96-2	96"	24"	2:10"	1672 CFM @ .37" SP	1075 CFM @ .15" SP	904 CFM @ .11" SP
F-181-120-2	120"	24"	2:12"	2139 CFM @ .33" SP	1375 CFM @ .14" SP	1189 CFM @ .10" SP
F-181-144-2	144"	24"	2:12"	2606 CFM @ .49" SP	1675 CFM @ .20" SP	1475 CFM @ .16" SP

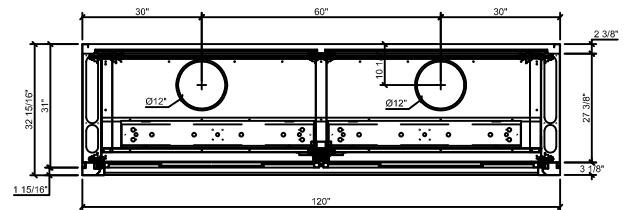
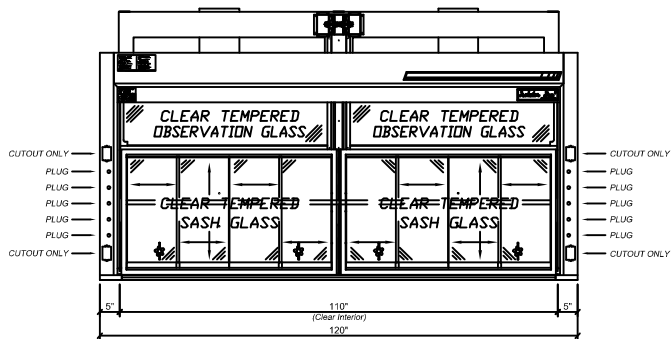
50% open may be achieved two ways: 1. vertical sash open 14", horizontal panels closed or 2. vertical sash closed, horizontal panels full open

F-181-2 Bench Fume Hood

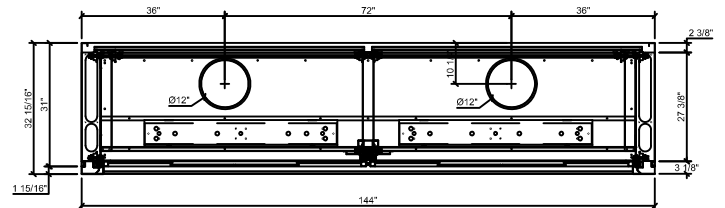
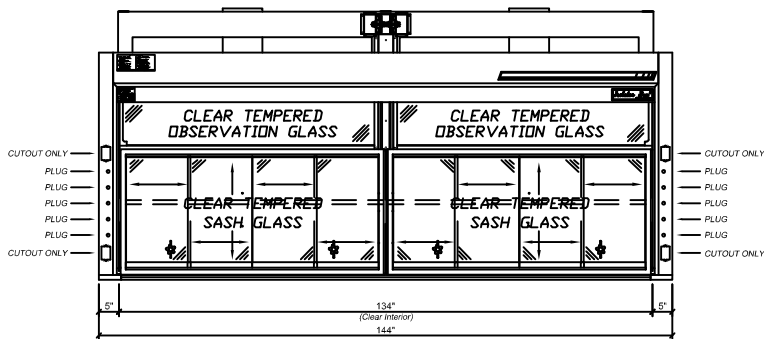
F-181-96-2 - 96" Wide



F-181-120-2 - 120" Wide



F-181-144-2 - 144" Wide



Section



F183-2 Dual Postless Bench Fume Hood - Framed Vertical Sash

ISOLATOR Gen-5 Bench Fume Hood - This specialty fume hood is designed to meet most laboratory Constant Air Volume (CAV) or Variable Air Volume (VAV) requirements and supplied with and automatic compensating upper by-pass. For VAV, use op on MOD-0004 for a restricted by-pass position of observation glass. Designed to mount on a 31" deep counter top. The ISOLATOR Gen-5 bench mounted dual postless fume hood is supplied with the following standard features:

Counter Balance Systems - Chain and sprocket system delivers the easiest and most reliable sash opera on available with an exceptional product life-cycle ISOLATOR drive system provides economical and reliable operation; tested to over 1 million cycles with no failure.

Sash Design - 1/4" thick tempered safety glass panels are provided with epoxy urethane coated steel frames. Optional laminated safety glass or polycarbonate available for special applications. Hood has a two framed vertical sashes and a 42" exterior sightline.

Lower Airfoil - Aerodynamic flush sill design allows air to enter the fume hood even when the sash is closed ensuring efficient fume exhaust. The flip up safety trough cover allows electrical wiring or tubing into the fume hood while still permitting full closure of the sash.

Stainless Steel Type 304 Exhaust Collar - Round collar which allows for direct connection to typical exhaust ducts to reduce duct transition costs, minimize static pressure losses and exhaust noise levels.

Electrical - Two UL/CSA approved duplex receptacles provided for 120 volt service, one on each corner post. UL/CSA approved LED light fixture and switch provided. Explosion proof fixtures are available options.

Plumbing - Both corner posts are pre-punched to accept a maximum of five plumbing fittings per post. Factory pre-plumbing is available as well as plumbing fixtures from a variety of manufacturers to meet most plumbing needs.

Access Panels - Interior overlay style access panels provide convenient access and prevent accidental removal. Exterior side panels are also removable for ease of access to plumbing and electrical service fixtures.

Standards - UL 1805 Classified and tested in accordance with ASHRAE 110. Test results available upon request.

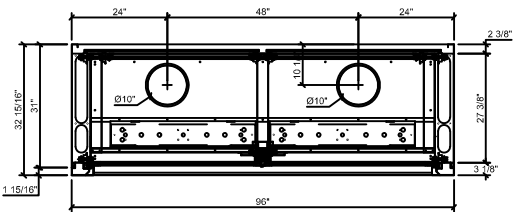
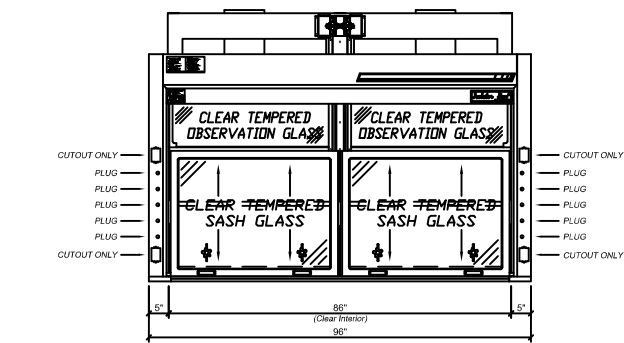


Rendering shown with optional features

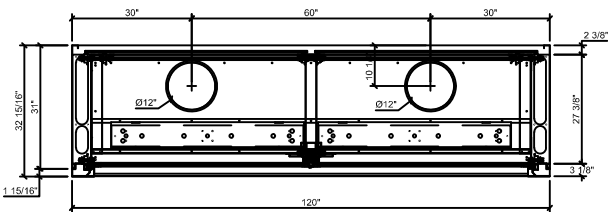
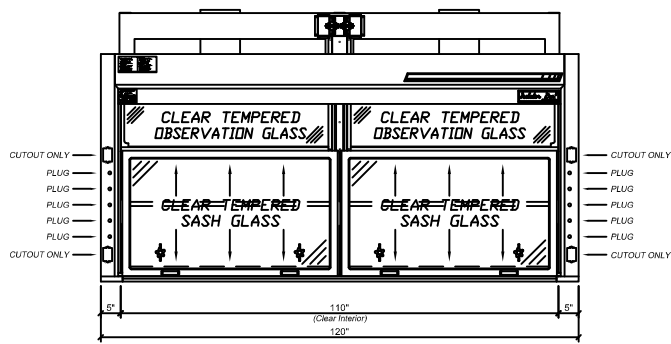
Catalog Number	Width	Clear Interior Depth	Duct Diameter	Both Sashes 28" Vertical Open @ 100 FPM	Both Sashes 18" Vertical Open @ 100 FPM	Single Sash 28" Vertical Open @ 100 FPM
F-183-96-2	96"	24"	2:10"	1672 CFM @ .37" SP	1075 CFM @ .15" SP	956 CFM @ .12" SP
F-183-120-2	120"	24"	2:12"	2139 CFM @ .33" SP	1375 CFM @ .14" SP	1222 CFM @ .11" SP
F-183-144-2	144"	24"	2:12"	2606 CFM @ .49" SP	1675 CFM @ .20" SP	1489 CFM @ .16" SP

F-183-2 Bench Fume Hood

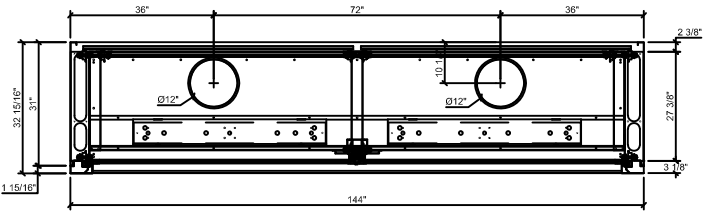
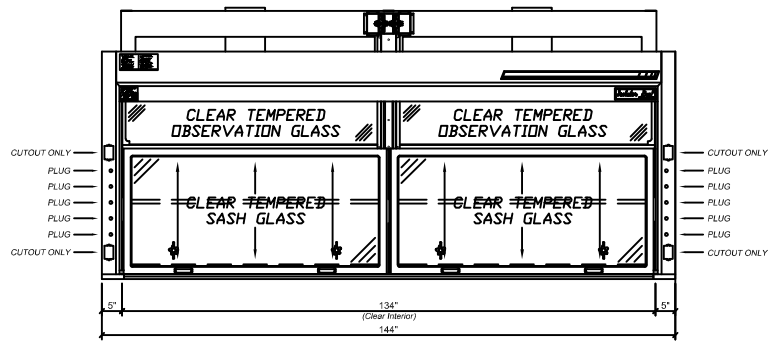
F-183-96-2 - 96" Wide



F-183-120-2 - 120" Wide

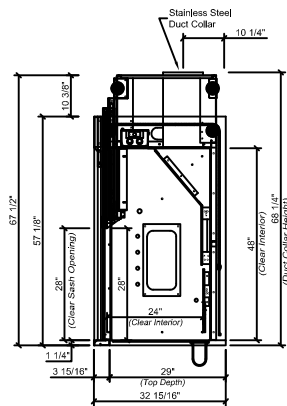


F-183-144-2 - 144" Wide



F-183-2 Bench Fume Hood

Section



F-183-4 Bench Fume Hood

F183-4 Quad Postless Bench Fume Hood - Framed Vertical Sash

ISOLATOR Gen-5 Bench Fume quad postless Hood - This specialty fume hood is designed to meet most laboratory Constant Air Volume (CAV) or Variable Air Volume (VAV) requirements and supplied with and automatic compensating upper by-pass. For VAV, use option MOD-0004 for a restricted by-pass position of observation glass. Designed to mount on a 31" deep counter top. The ISOLATOR Gen-5 bench quad postless mounted fume hood is supplied with the following standard features:

Counter Balance Systems - Chain and sprocket system delivers the easiest and most reliable sash operation available with an exceptional product life-cycle. ISOLATOR drive system provides economical and reliable operation; tested to over 1 million cycles with no failure.

Sash Design - 1/4" thick tempered safety glass panels are provided with epoxy urethane coated steel frames. Optional laminated safety glass or polycarbonate available for special applications. Hood has a four framed vertical sashes and a 42" exterior sightline.

Lower Airfoil - Aerodynamic flush sill design allows air to enter the fume hood even when the sash is closed ensuring efficient fume exhaust. The flip up safety trough cover allows electrical wiring or tubing into the fume hood while still permitting full closure of the sash.

Stainless Steel Type 304 Exhaust Collar - Round collar which allows for direct connection to typical exhaust ducts to reduce duct transition costs, minimize static pressure losses and exhaust noise levels.

Electrical - Two UL/CSA approved duplex receptacles provided for 120 volt service, one on each corner post. UL/CSA approved LED light fixture and switch provided. Explosion proof fixtures are available options.

Plumbing - Both corner posts are pre-punched to accept a maximum of five plumbing fittings per post. Factory pre-plumbing is available as well as plumbing fixtures from a variety of manufacturers to meet most plumbing needs.

Access Panels - Interior overlay style access panels provide convenient access and prevent accidental removal. Exterior side panels are also removable for ease of access to plumbing and electrical service fixtures.

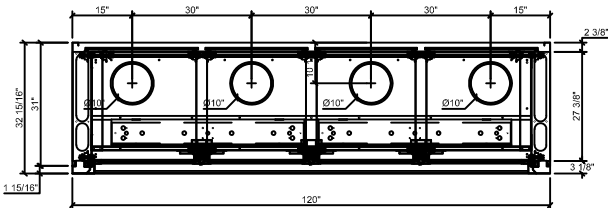
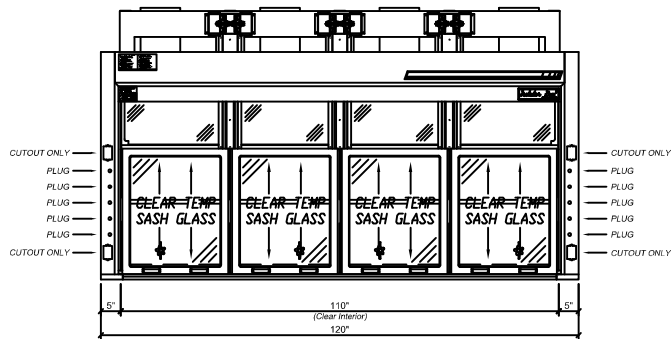
Standards - UL 1805 Classified and tested in accordance with ASHRAE 110. Test results available upon request.



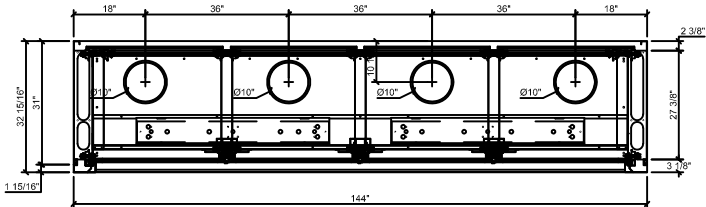
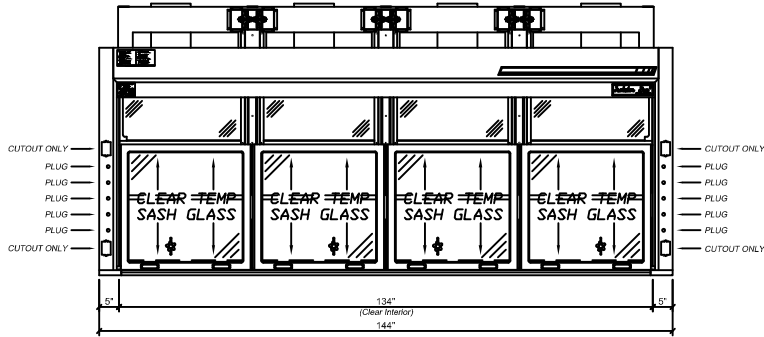
Rendering shown with optional features

Catalog Number	Width	Clear Interior Depth	Duct Diameter	Both Sashes 28" Vertical Open @ 100 FPM	Both Sashes 18" Vertical Open @ 100 FPM	Single Sash 28" Vertical Open @ 100 FPM
F-183-120-4	120"	24"	2:12"	2139 CFM @ .33" SP	1375 CFM @ .14" SP	764 CFM @ .04" SP
F-183-144-4	144"	24"	2:12"	2606 CFM @ .49" SP	1675 CFM @ .20" SP	931 CFM @ .06" SP

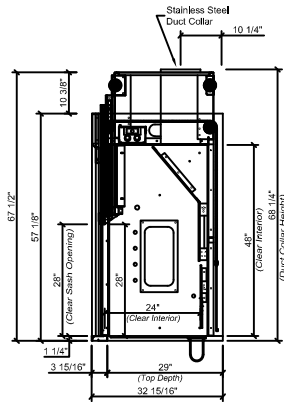
F-183-120-4 - 120" Wide



F-183-144-4 - 144" Wide



Section





SAI SYSTEMS

Scientifically Advanced Interiors

Toll Free: (866) 527-2970

sales@saisns.com

www.saisns.com

BURNABY

TORONTO

HALIFAX